

***Intermot Hydraulic Motors
IAM·HD Series***

TECHNICAL CATALOGUE

INDEX

MOTOR TECHNICAL DATA	Pag. 2
IAM·HD H3 SERIES	Pag. 3
IAM·HD H4 SERIES	Pag. 7
IAM·HD H5 SERIES	Pag. 12
IAM·HD H6 SERIES	Pag. 16
IAM·HD H7 SERIES	Pag. 21
IAM·HD H8 SERIES	Pag. 26
FLOW DISTRIBUTORS	Pag. 31
ACCESSORIES	Pag. 32

Motor Technical Data

MODEL	N° of pistons	Displacement	Specific Torque	Pressure			Speed		Max Power	Dry Mass	Max case pressure	Max back pressure	Temperature range	
				Max Cont.	Max Int.	Peak	Max Cont.	Peak						
				cm ³ /rev	Nm/bar	bar								rpm
IAM•HD H3	400	5	397	6.3	270	320	350	750	860	120	68	6	70	-30 ÷ +70
	450		452	7.2	270	320	350	750	760	120				
	500		491	7.8	270	320	350	750	690	120				
IAM•HD H4	700	5	714	11.4	270	320	350	500	580	150	92	6	70	-30 ÷ +70
	800		792	12.6	270	320	350	450	520	150				
	1000		992	15.8	270	320	350	355	405	150				
IAM•HD H5	1400	5	1376	21.9	270	320	350	410	470	200	173	6	70	-30 ÷ +70
	1600		1648	26.2	270	320	350	370	425	200				
	1800		1815	28.9	270	320	350	340	390	200				
IAM•HD H6	2200	5	2126	35.1	270	320	350	325	375	235	308	6	70	-30 ÷ +70
	2500		2525	40.2	270	320	350	285	325	235				
	3000		2983	47.5	270	320	350	235	270	235				
	3500		3479	55.4	270	320	350	210	240	235				
IAM•HD H7	3900	7	3907	62.2	270	320	350	175	200	258	405	6	70	-30 ÷ +70
	4300		4343	69.1	270	320	350	160	185	258				
	4600		4616	73.5	270	320	350	150	170	258				
	5000		5088	81	270	320	350	140	160	258				
	5400		5384	85.7	270	320	350	130	150	258				
IAM•HD H8	6000		5966	95	250	290	350	120	140	215	590	6	70	-30 ÷ +70
	6500		6581	104.7	250	290	350	120	140	215				
	6800		6962	110.8	250	290	350	120	140	215				
	7600		7620	121.3	190	230	290	90	100	215				
	8000		8062	128.3	180	220	280	80	90	215				

***Intermot Hydraulic Motors
IAM•HD Series***

H3 Models

IAM•HD 400 – 450 – 500 H3

INDEX

TECHNICAL DATA	Pag. 4
IAM•HD 400 – 450 – 500 H3	Pag. 5
ORDERING INSTRUCTIONS	Pag. 6

IAM•HD H3

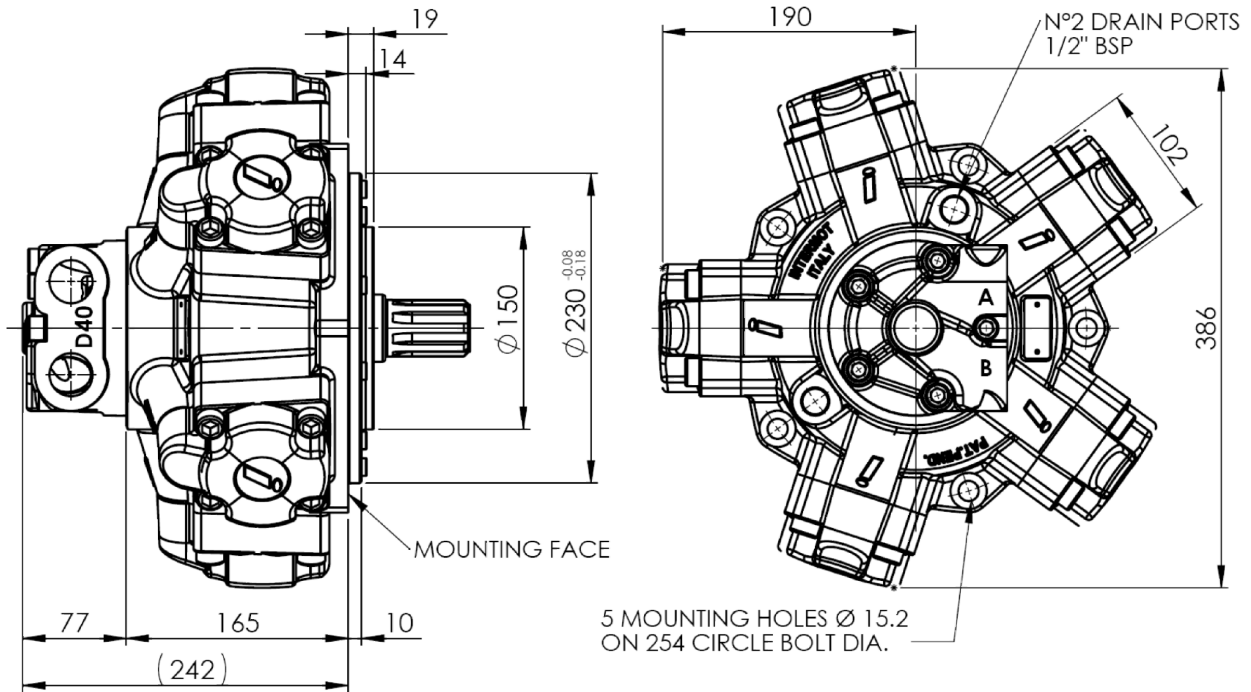
Technical data

MODEL		N° of pistons	Displacement	Specific Torque	Pressure			Speed		Max Power	Dry Mass	Max case pressure	Max back pressure	Temperature range
					Max Cont.	Max Int.	Peak	Max Cont.	Peak					
			cm ³ /rev	Nm/bar	bar			rpm		kW	kg	bar	bar	°C
IAM•HD H3	400	5	397	6.3	270	320	350	750	860	120	68	6	70	-30 ÷ +70
	450		452	7.2	270	320	350	750	760	120				
	500		491	7.8	270	320	350	750	690	120				

IAM•HD H3

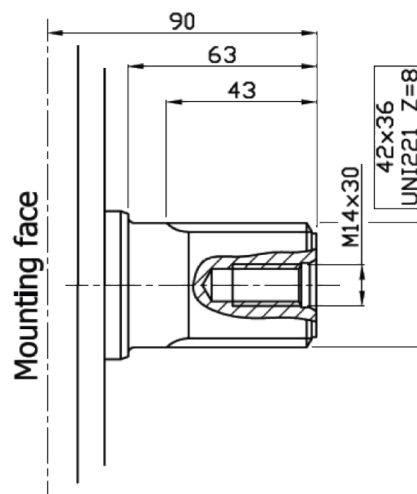
Dimensional drawings

IAM•HD 400 – 450 – 500 H3



SHAFTS

A0: Standard splined shaft





IAM•HD H3

Ordering instructions

IAM•HD	_ _ _	H3	A _	D _ _	SB _
Model					
Displacement					
400 cc/rev					
450 cc/rev					
500 cc/rev					
Housing			Shaft		
A0 – Standard splined shaft					
Distributor					
D40 – 1" BSP					
D47 – SAE 1" 3000 psi flange					
					Splined Billet
SB3 - 36 UNI 221					

EXAMPLE: IAM•HD 500 H3 A0 D40

***Intermot Hydraulic Motors
IAM•HD Series***

H4 Models

***IAM•HD 700 – 800 – 1000 H4
IAM•HD 700/C – 800/C H4***

INDEX

TECHNICAL DATA	Pag. 8
IAM•HD 700 – 800 – 1000 H4	Pag. 9
IAM•HD 700/C – 800/C H4	Pag. 10
ORDERING INSTRUCTIONS	Pag. 11

IAM•HD H4

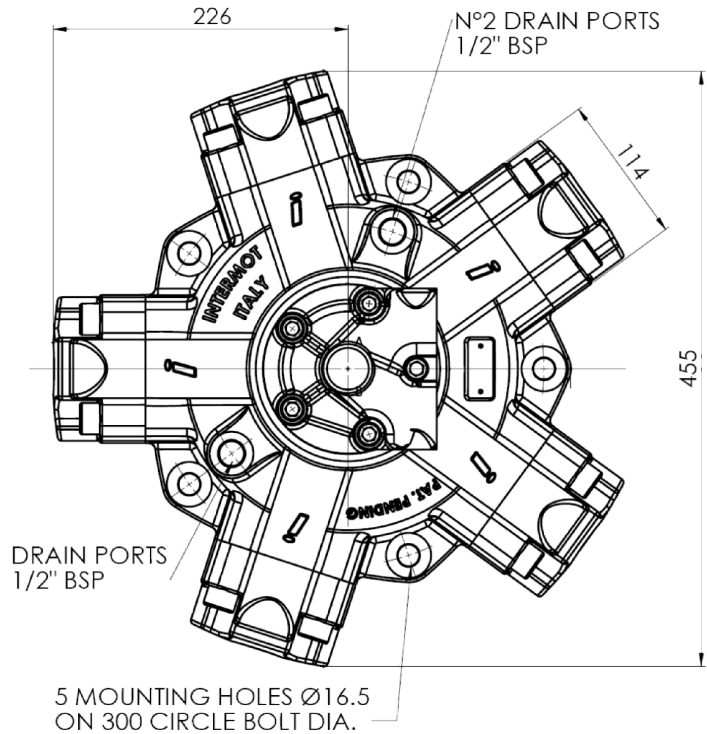
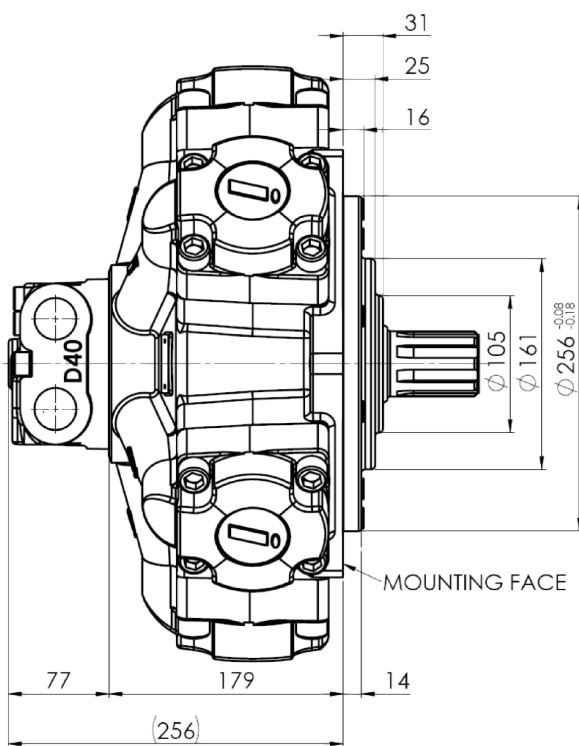
Technical data

MODEL		N° of pistons	Displacement	Specific Torque	Pressure			Speed		Max Power	Dry Mass	Max case pressure	Max back pressure	Temperature range
					Max Cont.	Max Int.	Peak	Max Cont.	Peak					
			cm ³ /rev	Nm/bar	bar			rpm		kW	kg	bar	bar	°C
IAM•HD H4	700	5	714	11.4	270	320	350	500	580	150	92	6	70	-30 ÷ +70
	800		792	12.6	270	320	350	450	520	150				
	1000		992	15.8	270	320	350	355	405	150				

IAM•HD H4

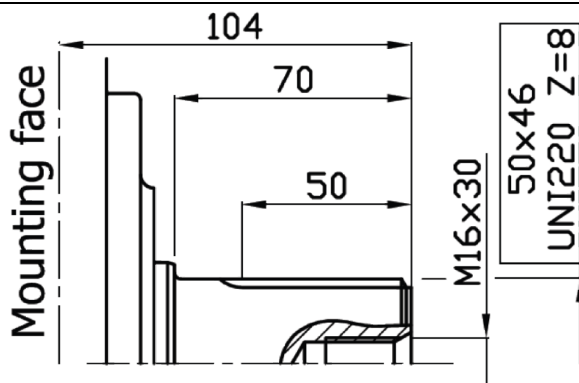
Dimensional drawings

IAM•HD 700 – 800 – 1000 H4

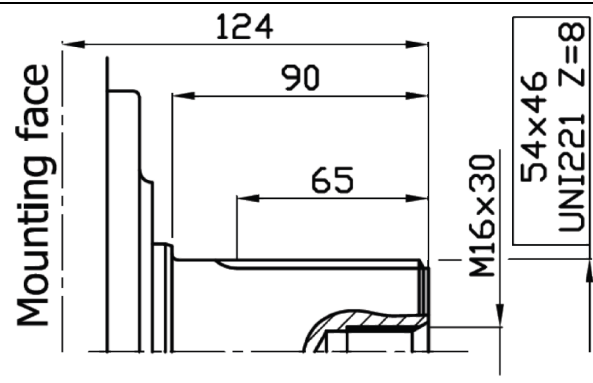


SHAFTS

A0: Standard splined shaft



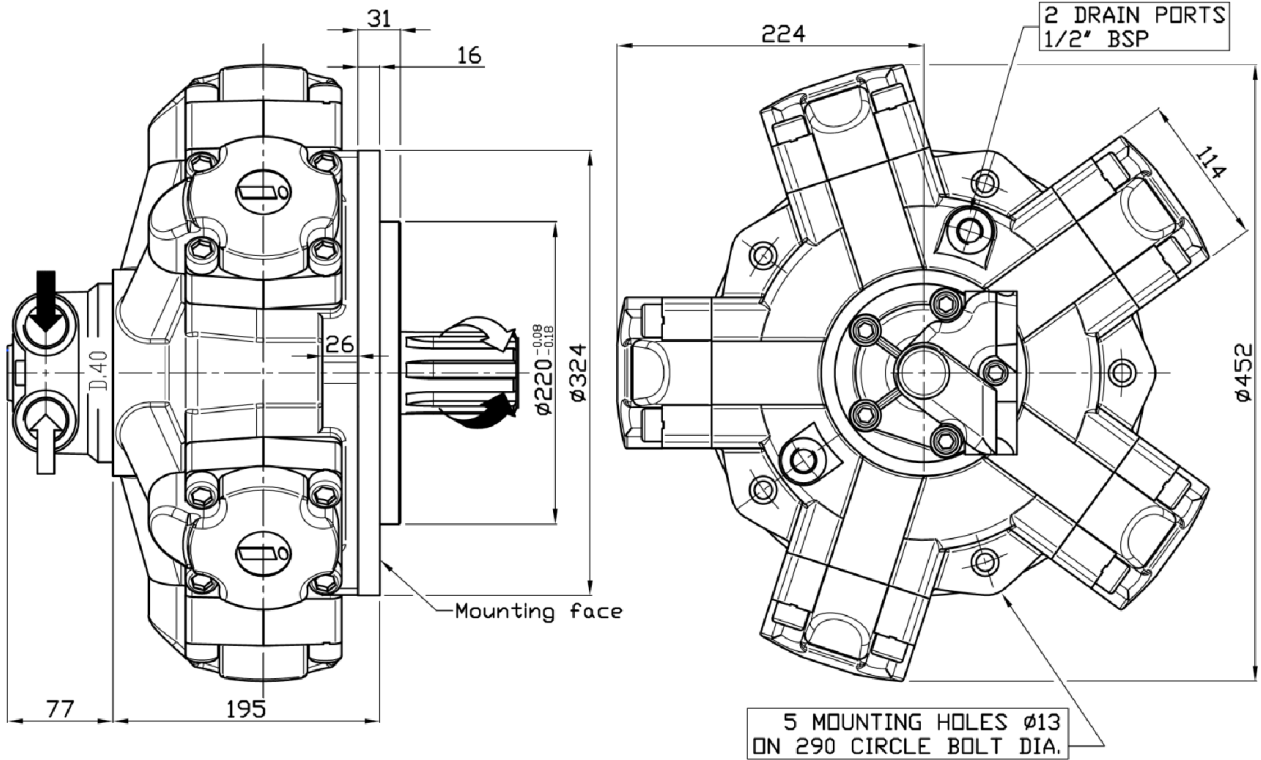
A1: Splined shaft on request



IAM•HD H4

Dimensional drawings

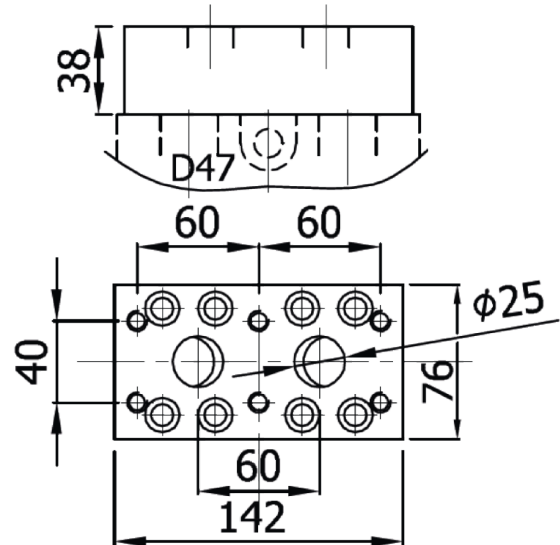
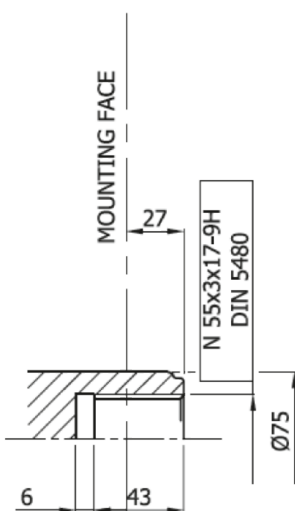
IAM•HD 700/C – 800/C H4



SHAFTS

A3: Internal splined shaft

Option FL2



IAM•HD H4

Ordering instructions

IAM•HD	---	/ _	H4	A _	D __	SB _
Model	Displacement					
700 cc/rev						
800 cc/rev						
1000 cc/rev						
	Interchangeability					
/C						
Housing				Shaft		
A0 – Standard splined shaft						
A1 – Special splined shaft						
A3 – Female shaft						
					Distributor	
D40 – 1" BSP						
D47 – SAE 1" 3000 psi flange						
						Spline billet
SB4 – 46 UNI 220						
SB5 – 46 UNI 221						

EXAMPLE: IAM•HD 800 H4 A0 D40

Intermot Hydraulic Motors IAM•HD Series

H5 Models

IAM•HD 1400 – 1600 – 1800 H5

INDEX

TECHNICAL DATA	Pag. 13
IAM•HD 1400 – 1600 – 1800 H5	Pag. 14
ORDERING INSTRUCTIONS	Pag. 15

IAM•HD H5

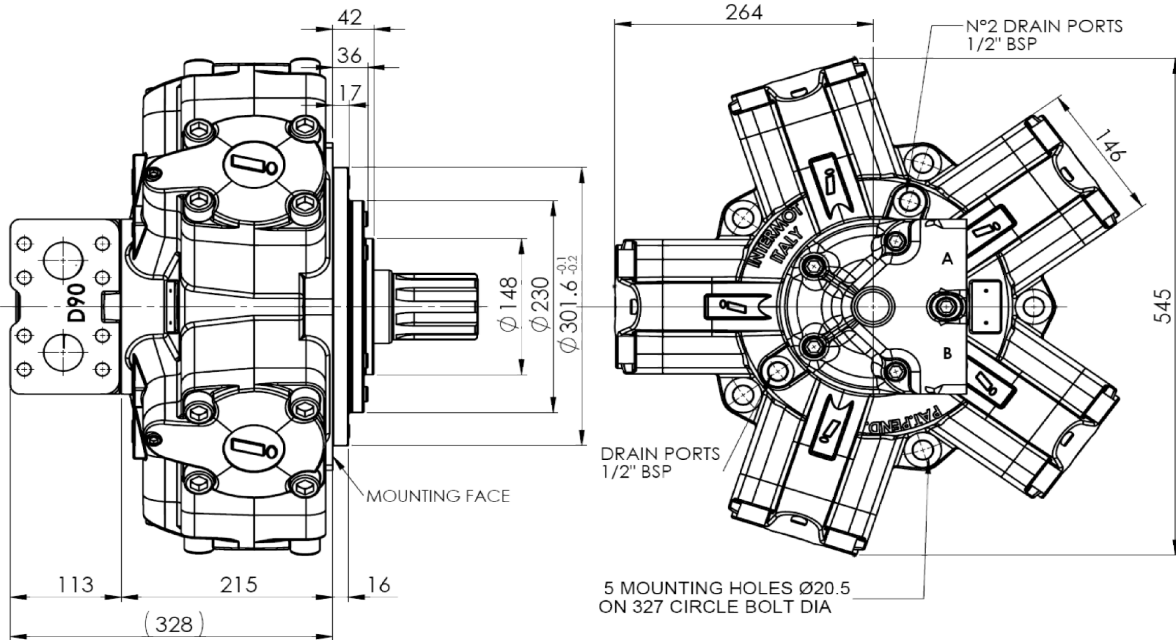
Technical data

MODEL		N° of pistons	Displacement	Specific Torque	Pressure			Speed		Max Power	Dry Mass	Max case pressure	Max back pressure	Temperature range
					Max Cont.	Max Int.	Peak	Max Cont.	Peak					
					cm ³ /rev	Nm/bar	bar							
IAM•HD H5	1400	5	1376	21.9	270	320	350	410	470	200	173	6	70	-30 ÷ +70
	1600		1648	26.2	270	320	350	370	425	200				
	1800		1815	28.9	270	320	350	340	390	200				

IAM•HD H5

Dimensional drawings

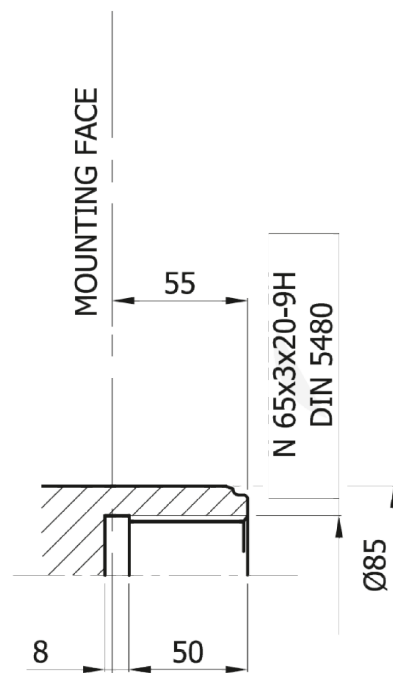
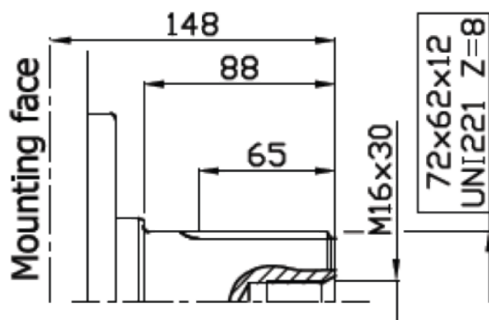
IAM•HD 1400 – 1600 – 1800 H5



SHAFTS

A0: Standard splined shaft

A31: Internal splined shaft on request



IAM•HD H5

Ordering instructions

IAM•HD	---	H5	A _	D _ _	SB _
Model					
Displacement					
1400 cc/rev					
1600 cc/rev					
1800 cc/rev					
Housing					
A0 – Standard splined shaft			Shaft		
A31 – Internal splined shaft on request					
				Distributor	
D75					
					Splined Billet
SB6 – 62 UNI 221					

EXAMPLE: IAM•HD 1600 H5 A0 D90

Intermot Hydraulic Motors IAM•HD Series

H6 Models

***IAM•HD 2200 – 2500 – 3000 – 3500 H6
IAM•HD 2200/C – 2500/C – 3000/C – 3500/C H6***

INDEX

TECHNICAL DATA	Pag. 17
IAM•HD 2200–2500–3000–3500	Pag. 18
IAM•HD 2200/C – 2500/C – 3000/C 3500/C H6	Pag. 19
ORDERING INSTRUCTIONS	Pag. 20

IAM•HD H6

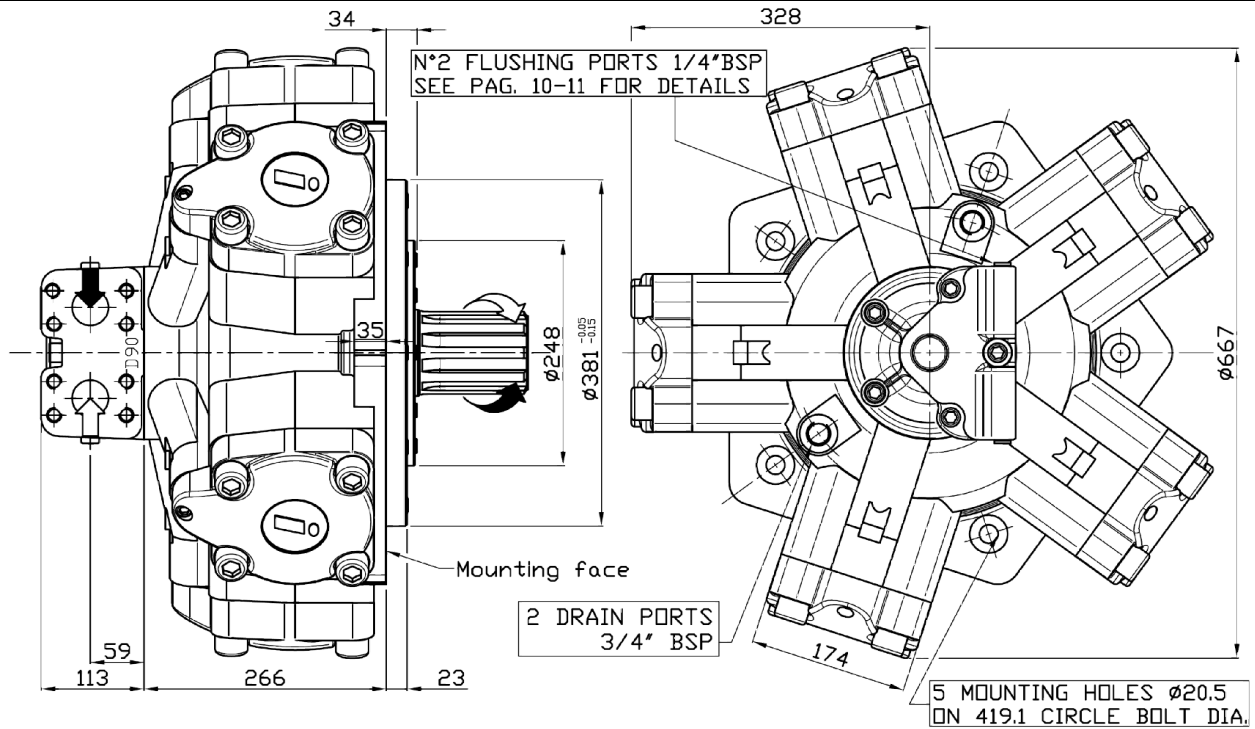
Technical data

MODEL	N° of pistons	Displacement	Specific Torque	Pressure			Speed		Max Power	Dry Mass	Max case pressure	Max back pressure	Temperature range	
				Max Cont.	Max Int.	Peak	Max Cont.	Peak						
		cm ³ /rev	Nm/bar	bar			rpm		kW	kg	bar	bar	°C	
IAM•HD H6	2200	5	2126	35.1	270	320	350	325	375	235	308	6	70	-30 ÷ +70
	2500		2525	40.2	270	320	350	285	325	235				
	3000		2983	47.5	270	320	350	235	270	235				
	3500		3479	55.4	270	320	350	210	240	235				

IAM•HD H6

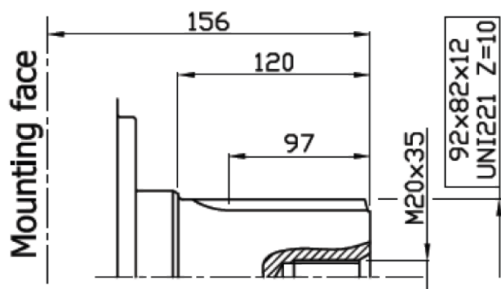
Dimensional drawings

IAM•HD 2200 – 2500 – 3000 – 3500 H6

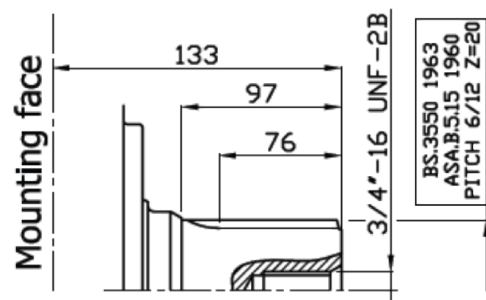


SHAFTS

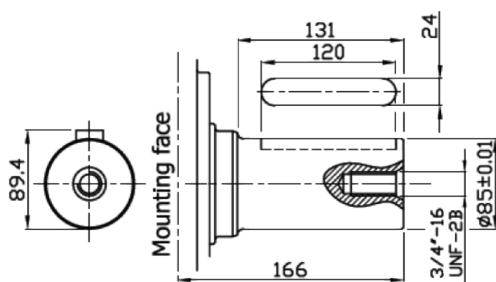
A0: Standard splined shaft



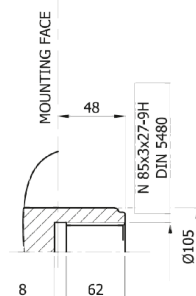
A1: Splined shaft on request



A2: Parallel shaft on request



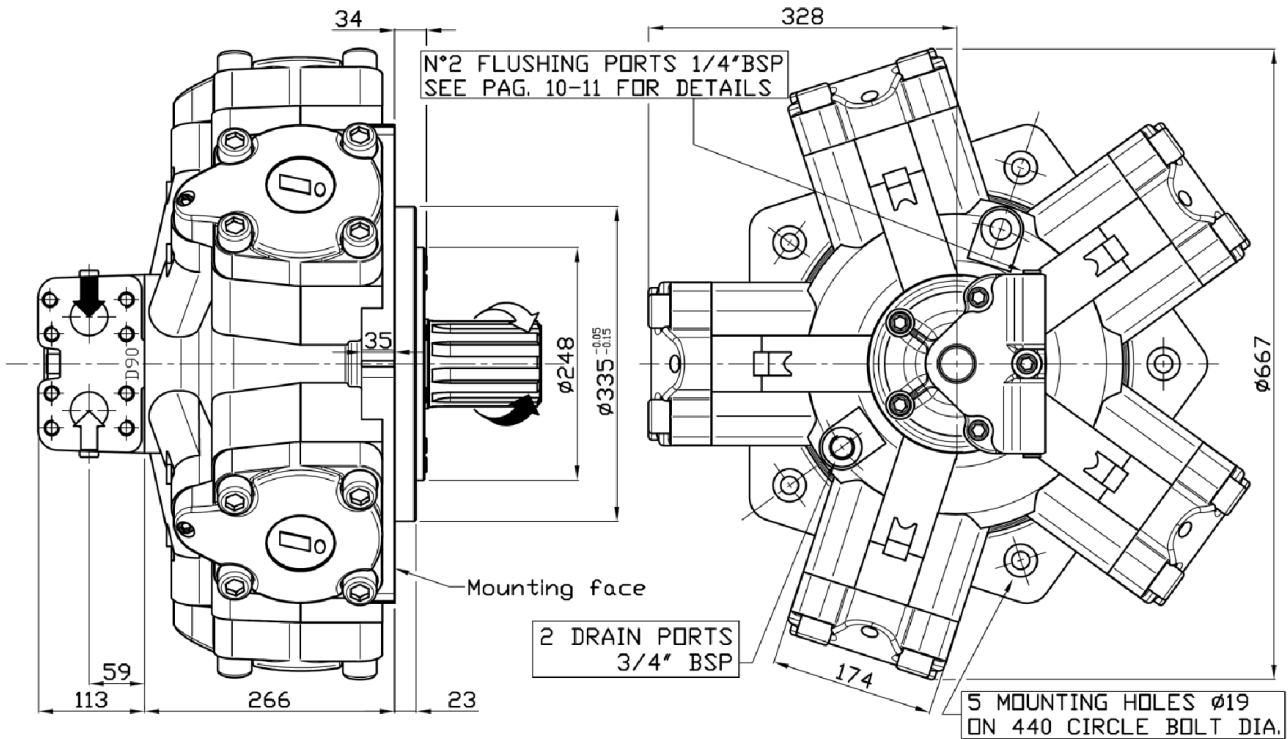
A3: Internal splined shaft



IAM•HD H6

Dimensional drawings

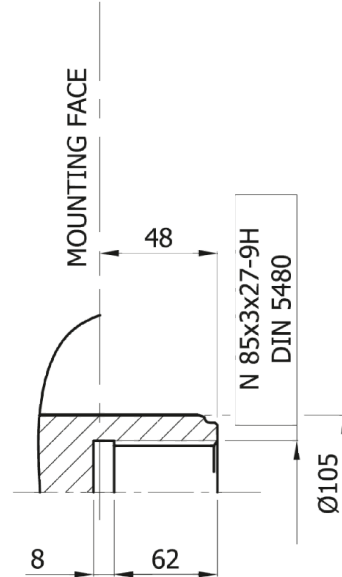
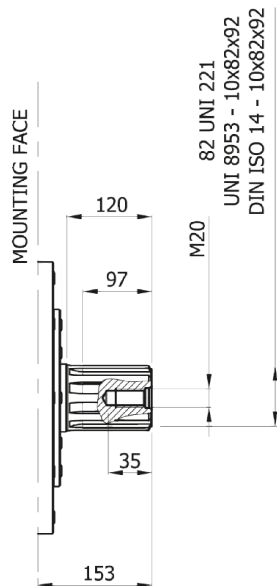
IAM•HD 2200/C – 2500/C – 3000/C – 3500/C H6



SHAFTS

A0: Standard splined shaft

A3: Internal splined shaft



IAM•HD H6

Ordering instructions

IAM•HD	----	/ _	H6	A _	D __	SB _
Model						
Displacement						
2200 cc/rev						
2500 cc/rev						
3000 cc/rev						
3500cc/rev						
Interchangeability						
/C						
Housing						
A0 – Standard splined shaft				Shaft		
A1 – Special splined shaft						
A2 – Parallel keyed shaft						
A3 – Internal splined shaft						
					Distributor	
D90 – SAE 1 ½ “ 6000 psi flange						
						Spline billet
SB9 – 82 UNI 221						
SB10 – BS 3550 20 T 6/12						

EXAMPLE: IAM•HD 3000 H6 A0 D90

***Intermot Hydraulic Motors
IAM•HD Series***

H7 Models

***IAM•HD 3900 – 4300 – 4600 – 5000 – 5400 H7
IAM•HD 3900/C – 4300/C – 4600/C – 5000/C – 5400/C H7***

INDEX

TECHNICAL DATA	Pag. 22
IAM•HD 3900 – 4300 – 4600	
5000 – 5400 H7	Pag. 23
IAM•HD 3900/C – 4300/C – 4600/C	
5000/C – 5400/C H7	Pag. 24
ORDERING INSTRUCTIONS	Pag. 25

IAM•HD H7

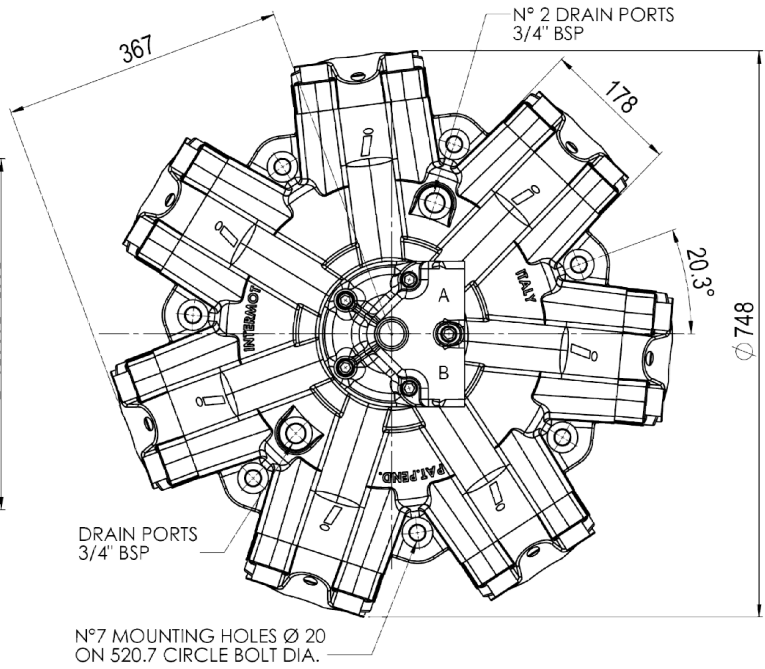
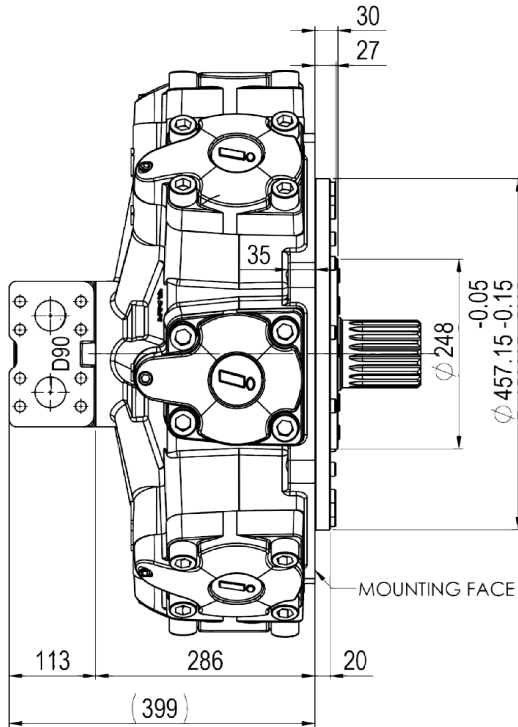
Technical data

MODEL	N° of pistons	Displacement	Specific Torque	Pressure			Speed		Max Power	Dry Mass	Max case pressure	Max back pressure	Temperature range
				Max Cont.	Max Int.	Peak	Max Cont.	Peak					
		cm ³ /rev	Nm/bar	bar			rpm		kW	kg	bar	bar	°C
IAM•HD H7	3900	3907	62.2	270	320	350	175	200	258	405	6	70	-30 ÷ +70
	4300	4343	69.1	270	320	350	160	185	258				
	4600	4616	73.5	270	320	350	150	170	258				
	5000	5088	81	270	320	350	140	160	258				
	5400	5384	85.7	270	320	350	130	150	258				

IAM•HD H7

Dimensional drawings

IAM•HD 3900 – 4300 – 4600 – 5000 – 5400 H7

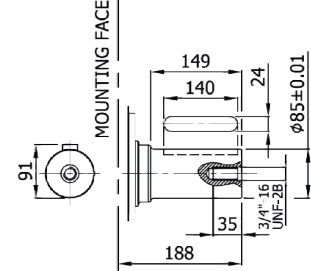
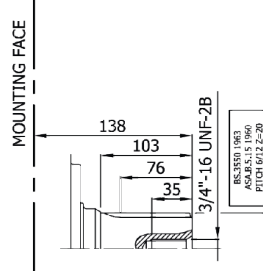
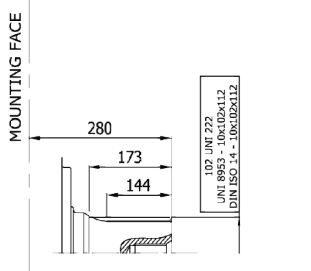


SHAFTS

A0: Standard splined shaft

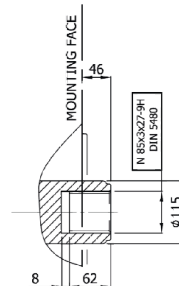
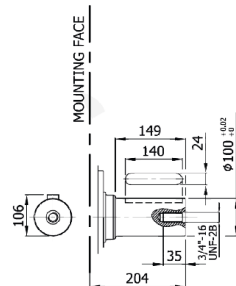
A1: Splined shaft on request

A2: Parallel shaft



A21: Parallel shaft on request

A3: Internal splined shaft

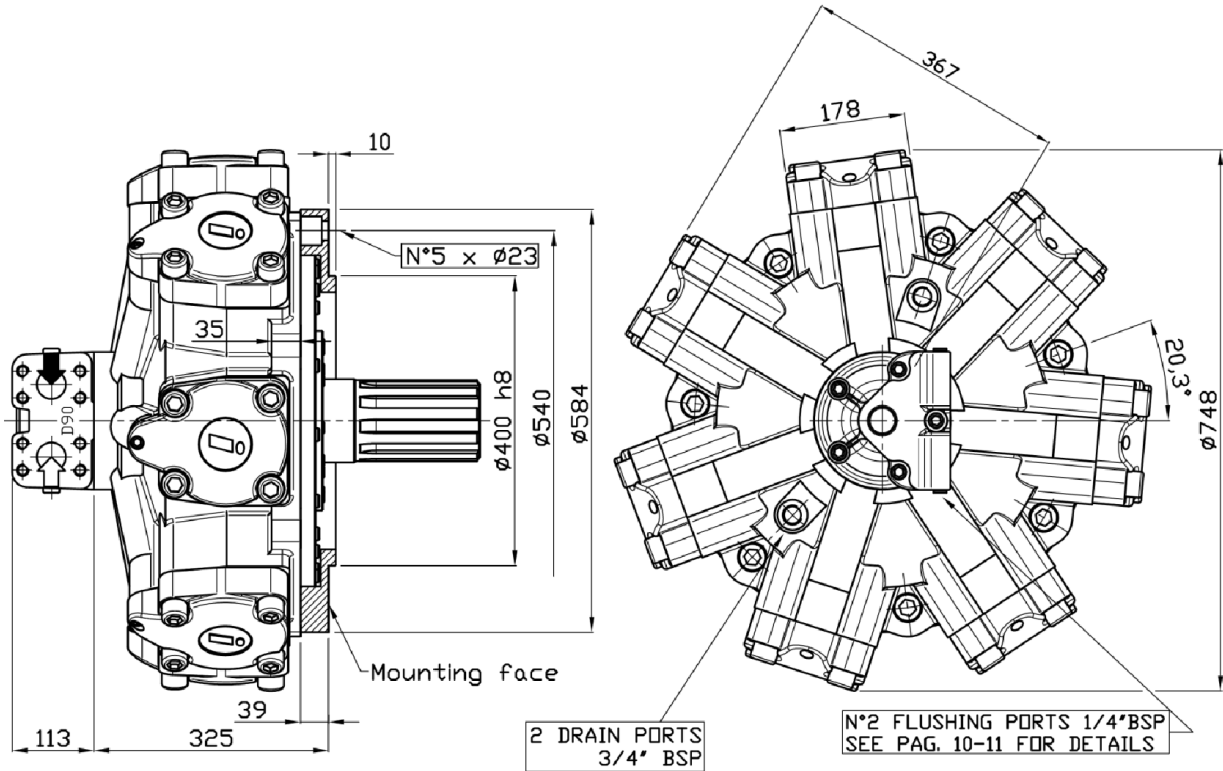


The data specified into this catalogue are for product description purpose only and must not be interpreted as warranted characteristic in legal sense. Intermot reserves the right to implement modification without notice.

IAM•HD H7

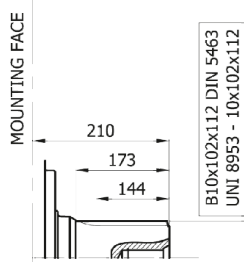
Dimensional drawings

IAM•HD 3900/C – 4300/C – 4600/C – 5000/C – 5400/C H7

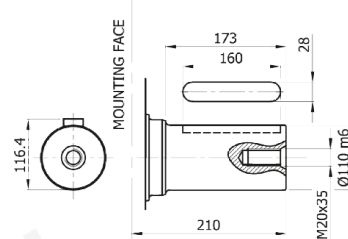


SHAFTS

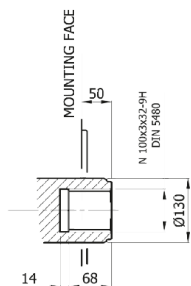
A0: Standard splined shaft



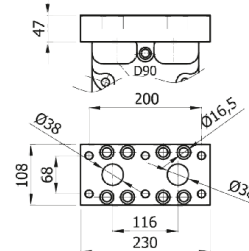
A2: Parallel shaft



A3: Internal Splined shaft



Option FL8



IAM•HD H7

Ordering instructions

IAM•HD	_ _ _ _	/ _	H7	A _	D _ _	SB _
Model						
	Displacement					
	3900 cc/rev					
	4300 cc/rev					
	4600 cc/rev					
	5000cc/rev					
	5400 cc/rev					
	Interchangeability					
	/C					
			Housing			
				Shaft		
	A0 – Standard splined shaft					
	A1 – Special splined shaft					
	A2 – Parallel keyed shaft					
	A21 – Parallel shaft on request					
	A3 – Internal splined shaft					
					Distributor	
	D90 – SAE 1 ½ “ 6000 psi flange					
						Spline billet
	SB10 – BS 3550 20 T 6/12					
	SB11 – 102 UNI 222					

EXAMPLE: IAM•HD 4300 H7 A1 D90

Intermot Hydraulic Motors IAM•HD Series

H8 Models

***IAM•HD 6000 – 6500 – 6800 – 7600 – 8000 H8
IAM•HD 6000/C – 6500/C – 6800/C – 7600/C – 8000/C H8***

INDEX

TECHNICAL DATA	Pag. 27
IAM•HD 6000 – 6500 – 6800 – 7600 – 8000 H8	Pag. 28
IAM•HD 6000/C – 6500/C – 6800/C 7600/C – 8000/C H8	Pag. 29
ORDERING INSTRUCTIONS	Pag. 30

IAM•HD H8

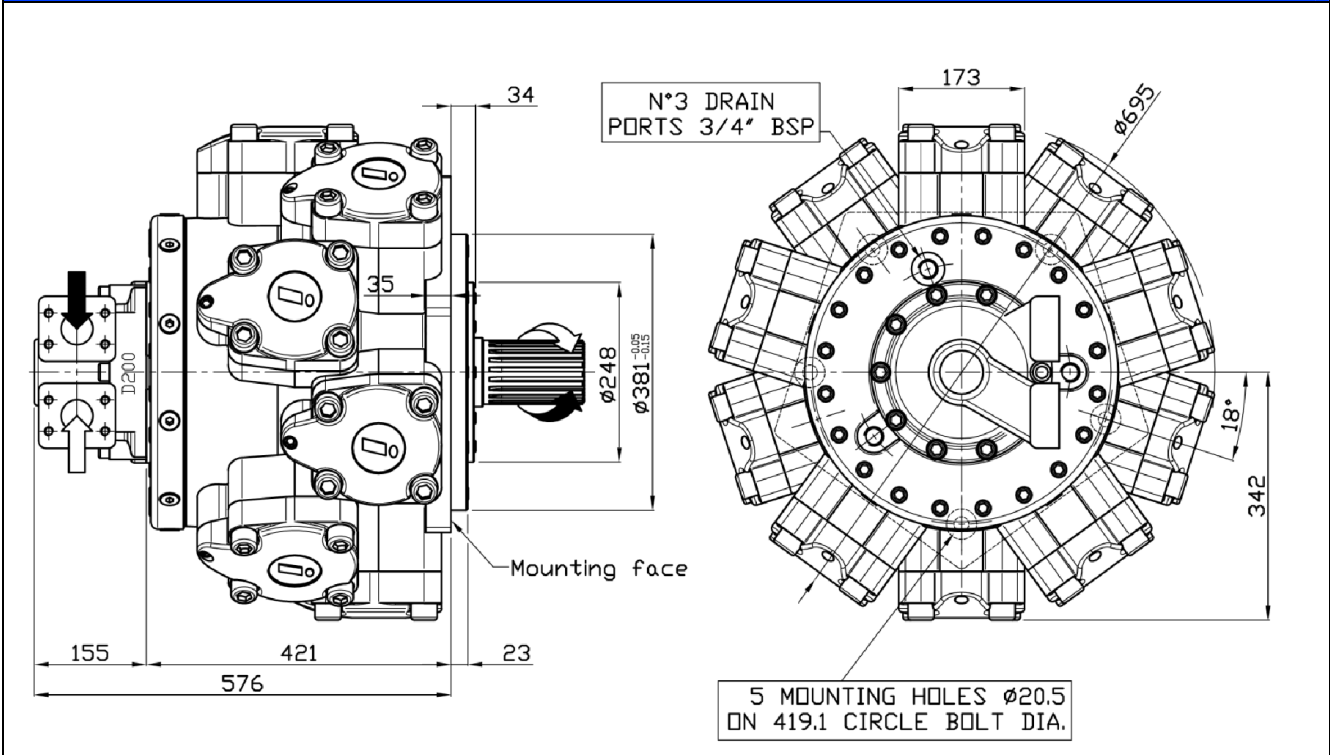
Technical data

MODEL	N° of pistons	Displacement	Specific Torque	Pressure			Speed		Max Power	Dry Mass	Max case pressure	Max back pressure	Temperature range
				Max Cont.	Max Int.	Peak	Max Cont.	Peak					
				cm ³ /rev	Nm/bar	bar							
IAM•HD H8	6000	5966	95	250	290	350	120	140	215	590	6	70	-30 ÷ +70
	6500	6581	104.7	250	290	350	120	140	215				
	6800	6962	110.8	250	290	350	120	140	215				
	7600	7620	121.3	190	230	290	90	100	215				
	8000	8062	128.3	180	220	280	80	90	215				

IAM•HD H8

Dimensional drawings

IAM•HD 6000 – 6500 – 6800 – 7600 – 8000 H8



SHAFTS

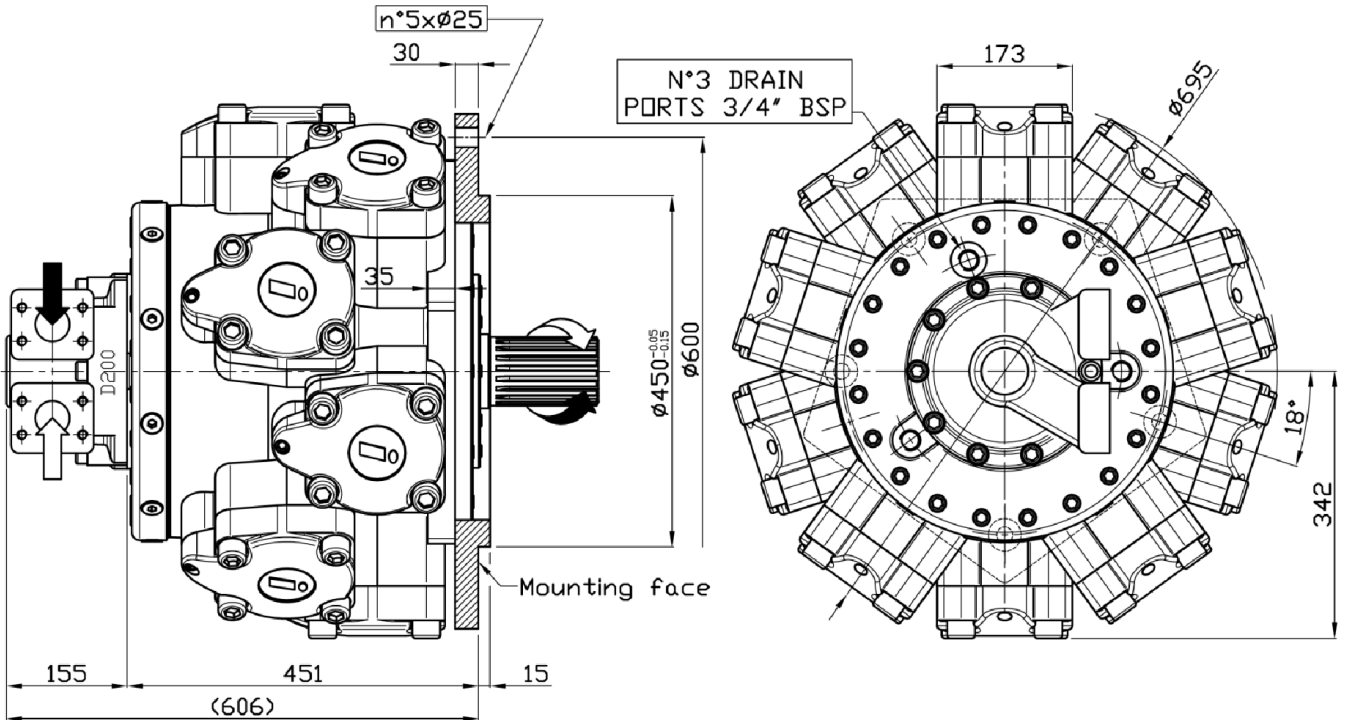
A1: Standard splined shaft		A11: Splined shaft on request	
A2: Parallel shaft	A22: Parallel shaft on request	A5: Splined shaft on request	

The data specified into this catalogue are for product description purpose only and must not be interpreted as warranted characteristic in legal sense. Intermot reserves the right to implement modification without notice.

IAM•HD H8

Dimensional drawings

IAM•HD 6000/C – 6500/C – 6800/C – 7600/C – 8000/C H8

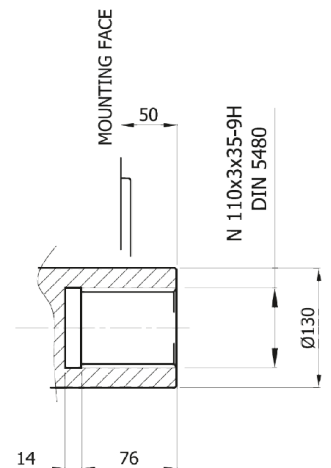
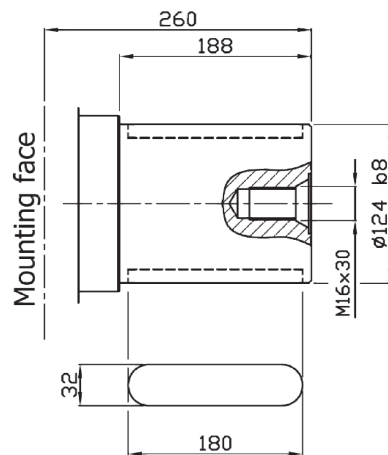
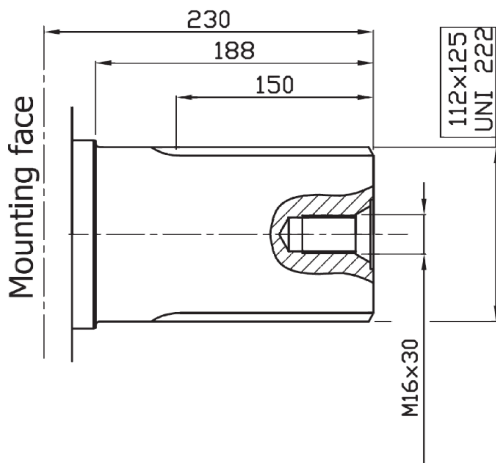


SHAFTS

A0: Standard splined shaft

A2: Parallel shaft on request

A3: Internal splined shaft



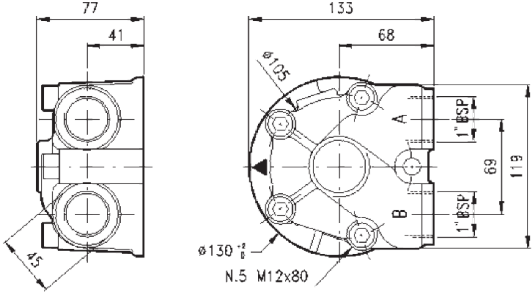
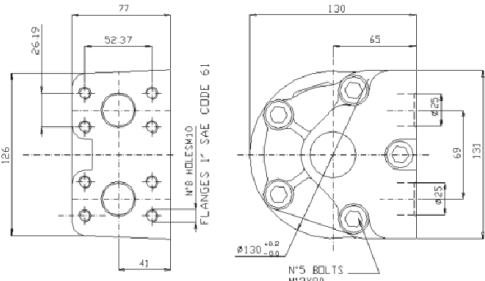
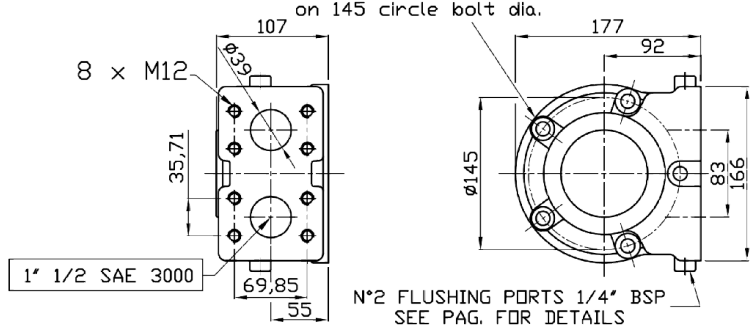
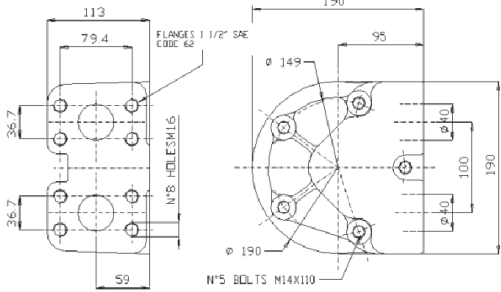
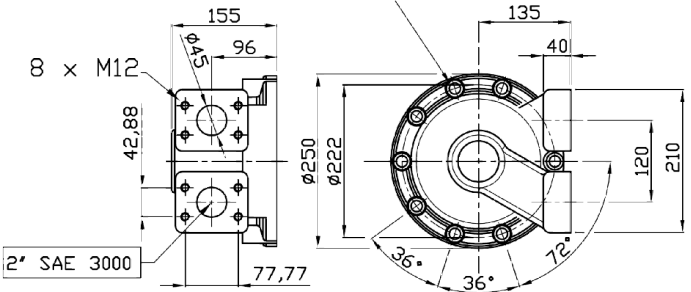
IAM•HD H8

Ordering instructions

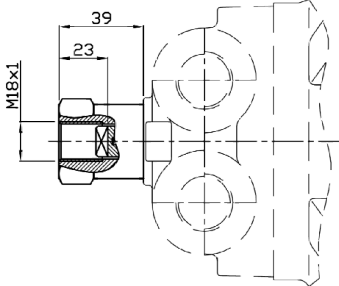
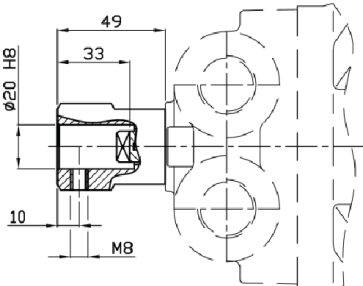
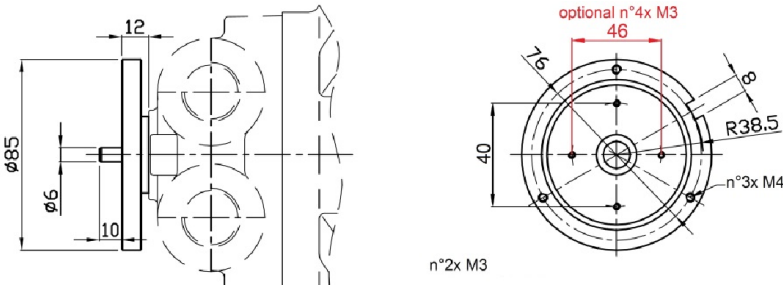
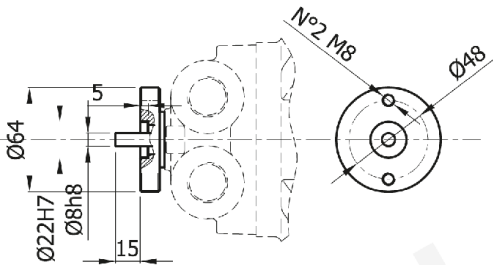
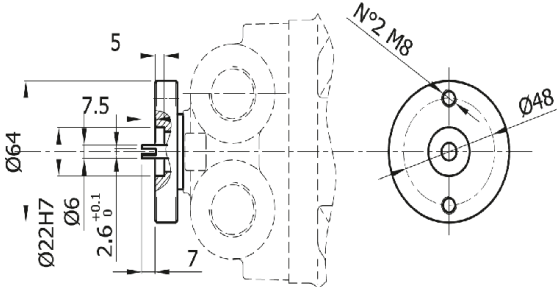
IAM•HD	---	/ _	H8	A _	D __	SB _
Model						
Displacement						
6000 cc/rev						
6500 cc/rev						
6800 cc/rev						
7600cc/rev						
8000 cc/rev						
Interchangeability						
/C						
Housing						
A0 – Standard splined shaft				Shaft		
A1 – Special splined shaft						
A11 – Splined shaft on request						
A2 – Parallel keyed shaft						
A22 – Parallel shaft on request						
A3 – Internal splined shaft						
A5 – Splined shaft on request						
					Distributor	
D200						
						Spline billet
SB12						

EXAMPLE: IAM•HD 6800 H8 A1 D200

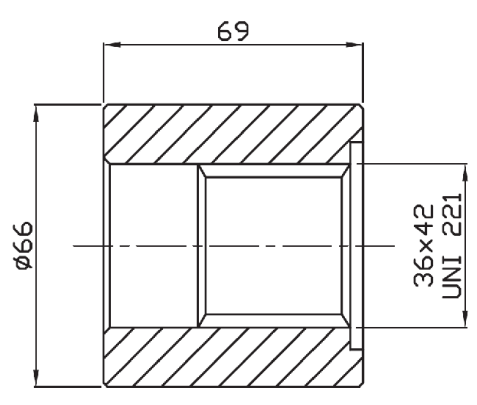
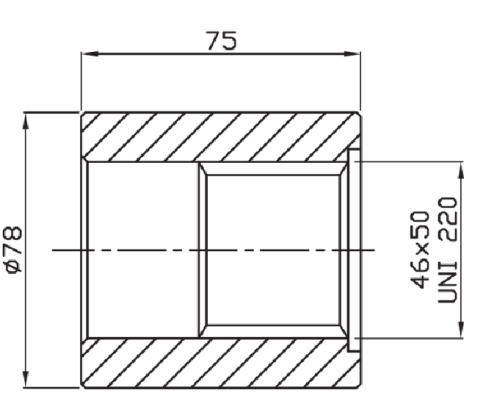
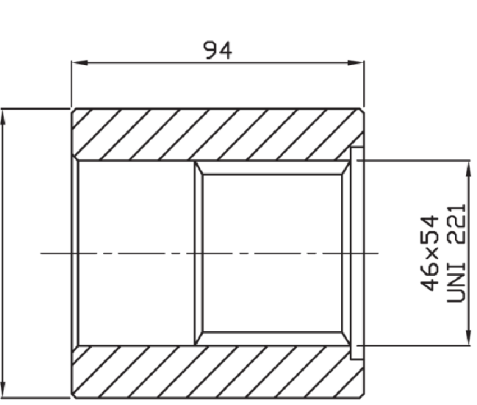
Flow distributors

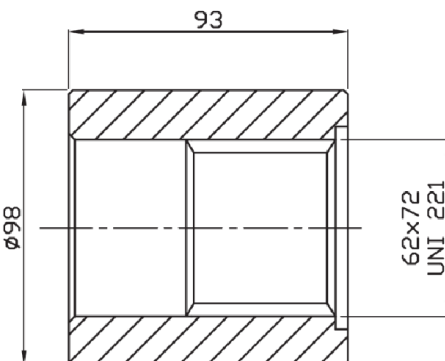
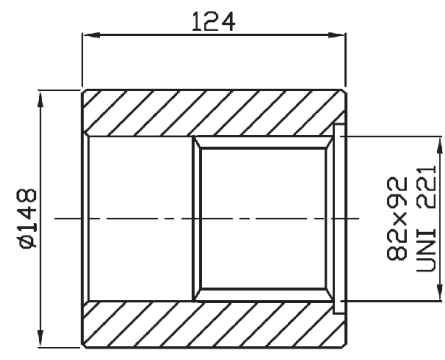
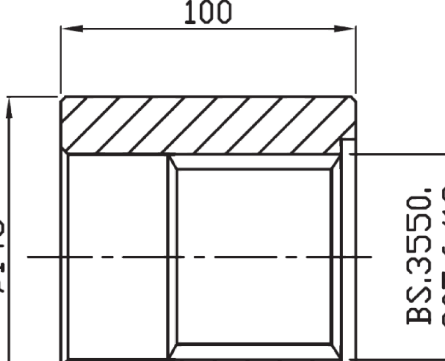
<p>D40</p>	<p>Distributor with 1" BSP ports For: IAM•HD H3 – IAM•HD H4</p>	
<p>D47</p>	<p>Distributor with SAE 1" 3000 psi flanges For: IAM•HD H3 – IAM•HD H4</p>	
<p>D75</p>	<p>For: IAM•HD H5</p>	<p>5 mounting holes $\varnothing 14.5$ on 145 circle bolt dia.</p> 
<p>D90</p>	<p>Distributor with SAE 1 1/2" 6000 psi flanges For: IAM•HD H5 – IAM•HD H6 – IAM•HD H7</p>	
<p>D200</p>	<p>For: IAM•HD H8</p>	<p>8 mounting holes $\varnothing 16.5$ on 222 circle bolt dia.</p> 

The data specified into this catalogue are for product description purpose only and must not be interpreted as warranted characteristic in legal sense. Intermot reserves the right to implement modification without notice.

<p>TA</p>	<p>Tacho drive code TA</p>	
<p>TB</p>	<p>Tacho drive code TB</p>	
<p>EST</p>	<p>Tacho drive code EST</p>	
<p>TQ1</p>	<p>Tacho drive code TQ1</p>	
<p>TT1</p>	<p>Tacho drive code TT1</p>	

Spline billets

SB3	<p>Only for: IAM•HD 400 – 450 – 500 H3</p>	
SB4	<p>Only for: IAM•HD 700 – 800 – 1000 H4 A0</p>	
SB5	<p>Only for: IAM•HD 700 – 800 – 1000 H4 A1</p>	

<p>SB6</p>	<p>Only for: IAM•HD 1400 – 1600 – 1800 H5 A0</p>	
<p>SB9</p>	<p>Only for: IAM•HD 2200 – 2500 – 3000 – 3500 H6 A0 IAM•HD 2200/C – 2500/C – 3000/C – 3500/C H6 A0</p>	
<p>SB10</p>	<p>Only for: IAM•HD 2200 – 2500 – 3000 – 3500 H6 A1 IAM•HD 3900 – 4300 – 4600 – 5000 – 5400 H7 A1</p>	

SB11	<p>Only for:</p> <p>IAM•HD 3900 – 4300 – 4600 – 5000 – 5400 H7 A0</p> <p>IAM•HD 3900/C – 4300/C – 4600/C – 5000/C – 5400/C H7 A0</p>	<p>Technical drawing of a square flange. The outer width is 180. The outer diameter is Ø160. The hole size is 102x112 UNI 8953.</p>
SB12	<p>Only for:</p> <p>IAM•HD 6000/C – 6500/C – 6800/C – 7600/C – 8000/C H8 A0</p>	<p>Technical drawing of a square flange. The outer width is 195. The outer diameter is Ø170. The hole size is 112x125 UNI 8953.</p>